

BXUV.U055 Fire Resistance Ratings - ANSI/UL 263

Page Bottom

Fire Resistance Ratings - ANSI/UL 263

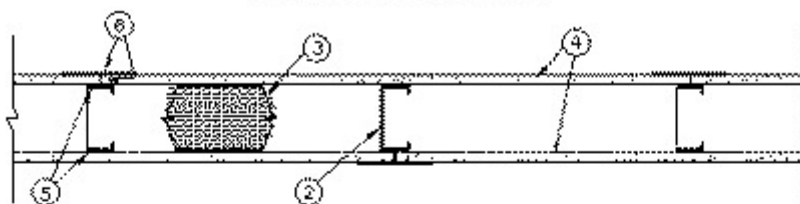
[See General Information for Fire Resistance Ratings - ANSI/UL 263](#)

Design No. U055

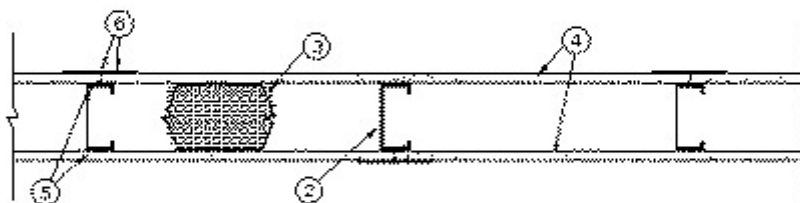
August 29, 2006

Nonbearing Wall Ratings — 1-1/2, 2 or 3 Hr (See Item 4)

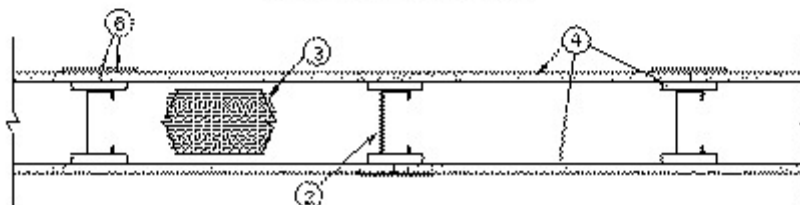
1-1/2 HR CONFIGURATION



2 HR CONFIGURATION



3 HR CONFIGURATION



1. **Floor and Ceiling Runners** — (Not shown) — Channel shaped, fabricated from min 22 MSG corrosion-protected steel, min width to accommodate stud size, with min 1-1/4 in. long legs, attached to floor and ceiling with fasteners 24 in. OC max.

2. **Steel Studs** — Channel shaped, fabricated from min 22 MSG corrosion-protected steel, min width as indicated under Item 4, min 1-1/2 in. flanges, spaced a max of 24 in. OC. Studs to be cut 3/4 in. less than assembly height.

3. **Batts and Blankets*** — Mineral wool batts, friction fitted between studs and runners. Min nom thickness and min density as indicated under Item 4. See **Batts and Blankets (BKNV or BZJZ)** Categories for names of Classified companies.

4. **Building Units*** — 4 ft. wide Type Dragonboard magnesium oxide panels.

1-1/2 Hr Rating — Outer surface of steel studs (Item 2) covered with gasket tape (Item 5) prior to panel installation. Panels installed vertically with vertical joints centered over studs and staggered from vertical joints on opposite side of

studs. Horizontal joints staggered from horizontal joints on opposite side of studs and backed by a min 20 MSG, nom 3-1/2 in. wide steel nailer plate (not shown) centered behind the horizontal joint. Outer surface of steel nailer plate covered with gasket tape (Item 5). Plate secured to steel studs prior to panel placement. Max 1/16 in. separation at all panel joints. Joint separation completely filled with fill material (Item 6). Panels attached to studs and plates with 1-1/4 in. long bugle head screws spaced 6 in. OC max at the perimeter and in the field.

2 Hr Rating — Outer surface of steel studs (Item 2) covered with gasket tape (Item 5) prior to panel installation. Panels installed vertically with vertical joints centered over studs and staggered from vertical joints on opposite side of studs. Horizontal joints staggered from horizontal joints on opposite side of studs and backed by a min 20 MSG, nom 4 in. wide steel nailer plate (not shown) centered behind the horizontal joint. Outer surface of steel nailer plate covered with gasket tape (Item 5). Plate secured to steel studs prior to panel placement. Panel joints filled with a 3/16 in. bead of fill material (Item 6) and butted tight. Panels attached to studs and plates with 2 in. long bugle head screws spaced 6 in. OC max at the perimeter and in the field.

3 Hr Rating — A 3 in. wide strip of Type Dragonboard magnesium oxide panel is secured to the outer surface of steel studs (Item 2) prior to panel placement. Panels installed vertically with vertical joints centered over studs and staggered from vertical joints on opposite side of studs. Horizontal joints staggered from horizontal joints on opposite side of studs and backed by a min 18 MSG, nom 4 in. wide steel nailer plate (not shown) centered behind the horizontal joint. Plate secured to steel studs prior to panel placement. Panel joints filled with a 3/16 in. bead of fill material (Item 6) and butted tight. Panels attached to studs and plates with 2 in. long bugle head screws spaced 6 in. OC max at the perimeter and in the field.

The min stud depth and thickness of insulation for the 1-1/2 hr, 2 hr and 3 hr ratings are as follows:

Rating, Hr	Min Stud Depth, in. (Item 2)	Min Thickness of Insulation (Item 3)	Min Density of Insulation (Item 3)
1-1/2	3-5/8	3 in.	5.7 pcf
2	3-5/8	4 in.	6.1 pcf
3	4	4 in.	6.1 pcf

DRAGONBOARD INC — Nom 9/16 in. thick Type Dragonboard.

5. **Gasket Tape** — Foam isolator tape with foiled backing, 1-1/4 in. wide by 1/8 in. thick, with pressure-sensitive adhesive on one side.

6. **Fill, Void or Cavity Materials*** — All vertical and horizontal joints of building unit panels covered with a 4 in. wide, min 1/8 in. thick layer of fill material. Screw heads covered with fill material.

PASSIVE FIRE PROTECTION PARTNERS — Type 4800DW Sealant.

*Bearing the UL Classification Mark

Last Updated on 2006-08-29

[Questions?](#)

[Notice of Disclaimer](#)

[Page Top](#)

®

The appearance of a company's name or product in this database does not in itself assure that products so identified have been manufactured under UL's Follow-Up Service. Only those products bearing the UL Mark should be considered to be Listed and covered under UL's Follow-Up Service. Always look for the Mark on the product.

UL permits the reproduction of the material contained in the Online Certification Directory subject to the following conditions: 1. The Guide Information, Designs and/or Listings (files) must be presented in their entirety and in a non-misleading manner, without any manipulation of the data (or drawings). 2. The statement "Reprinted from the Online Certifications Directory with permission from Underwriters Laboratories Inc." must appear adjacent to the extracted material. In addition, the reprinted material must include a copyright notice in the following format: "Copyright © 2008 Underwriters Laboratories Inc.®"

An independent organization working for a safer world with integrity, precision and knowledge.

